



Reed Contact Magnetic Sensors Ø 10



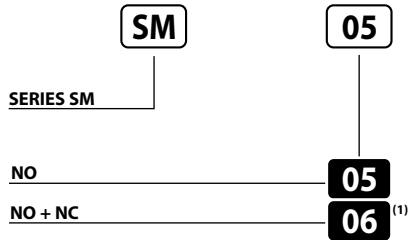
REED CONTACT MAGNETIC PROXIMITY SENSORS

- Metal housing
- 2 mS delay on activation
- 2 m integral cable
- Choice of magnet targets

SM Series

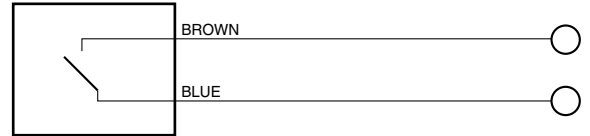


Identification code

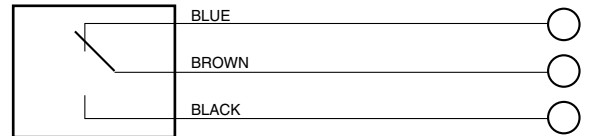


Wiring diagrams

NO CONTACT



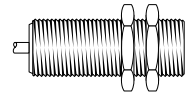
NO + NC CONTACT



MAX. VOLTAGE	230 V AC
MAX. CURRENT	0.5 A
POWER	10 W/VA
SWITCHING FREQUENCY	200 Hz
DELAY ON ACTIVATION	2 mS
REPEATABILITY	± 0.3 mm
TEMPERATURE LIMITS	-25 ÷ +70°C
PROTECTION DEGREE	IP 67
CABLE LENGTH	2m
CABLE SECTION	3 x 0.50 mm ²
HOUSING MATERIAL	Nickel-plated brass

Reed contact sensor / magnet switching distance (mm)

DIAMETER 10
Distance Hysteresis

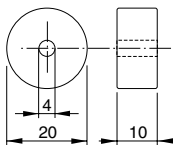


24	5	MG01
22	5	MG02
6	2,5	MG03
32	5	MG04
29	5	MG05

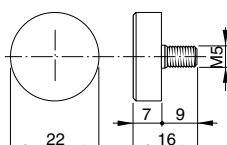
WARNING: The data specified in this table have an approximate value because they depend on the magnet position, on the material on which it is applied (ferromagnetic or not) and because they are related to the magnet during the frontal approach. Reed contact sensors can be also activated laterally considering that switching distances are always influenced by the magnet position and orientation besides the material on which it is applied (ferromagnetic or not).

Magnets dimensions (mm)

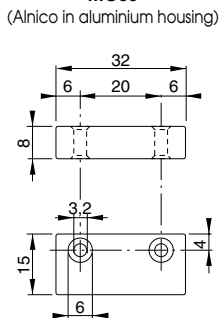
MG01 (Ferrite)



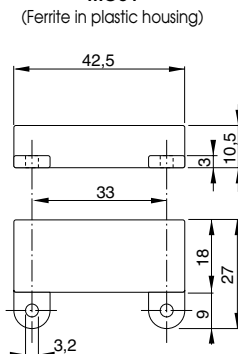
MG02 (Ferrite)



MG03

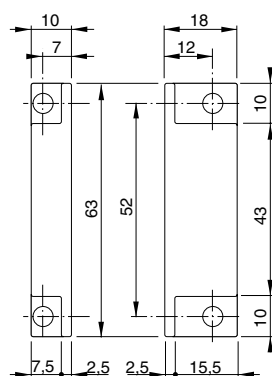


MG04



MG05

(Ferrite in plastic housing)



Dimensions (mm)

