

# Retro Ref. Photoelectric Sensors



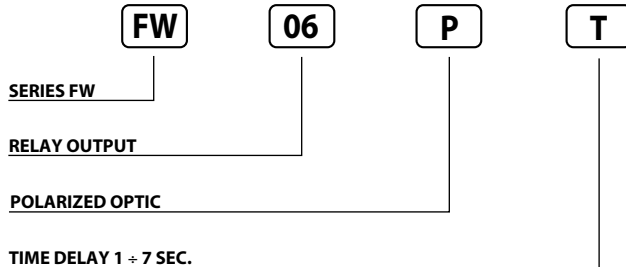
PH. SENSORS IN RECTANGULAR HOUSING 12 ÷ 240 V DC 24 ÷ 240 V AC WITH TIMER RELAY OUTPUT

- Wide range World Wide Power Supply
- Rectangular compact size
- Multi-function timer
- ON/OFF delay
- One shot-four functions
- Conduit wiring terminal block

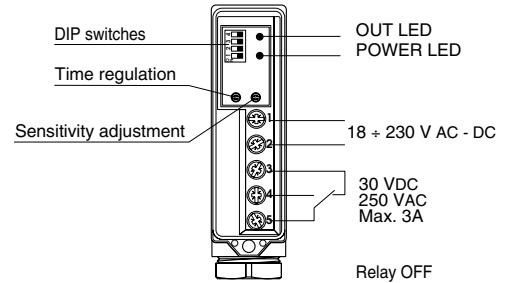
## FW Series



### Identification code



### Wiring diagrams



AVAILABLE	POLARIZED	STANDARD
SWITCHING DISTANCE	6 m <sup>(1)</sup>	10 m <sup>(1)</sup>
HYSTERESIS	10%	
EMISSION	Red (660 nm)	Infrared (875 nm)
NOMINAL VOLTAGE	18 ÷ 230 V AC - DC (-15 /+10%)	
NET FREQUENCY	45 ÷ 60 Hz	
OUTPUT	Relay (40 x 10 <sup>6</sup> mec. op. - 5 x 10 <sup>6</sup> elect. op.)	
MAX OUTPUT CURRENT	3A 250VAC - 3A 30VDC	
ABSORPTION	≤ 2W (2.5 VA)	
YELLOW LED	Light on indicator	
GREEN LED	Supply indicator	
SENSITIVITY ADJUSTEMENT	Trimmer 1 turn	
TIME REGULATION	0.1 ÷ 7 s ± 2 s (only models with timer)	
SWITCHING FREQUENCY	10 Hz	
RESPONSE TIME	100 mS	
START UP DELAY	≤ 300 mS	
TEMPERATURE LIMITS	-10° ÷ +60°C	
LIGHT IMMUNITY	> 10.000 Lux <sup>(2)</sup>	
PROTECTION DEGREE	IP 67	
CONNECTIONS	Screw	
CABLE GUIDE	PG 13.5	
HOUSING MATERIAL	Housing: ABS - Lenses: methacrylate	
WEIGHT (Approximately)	110 g	

### Timing diagrams

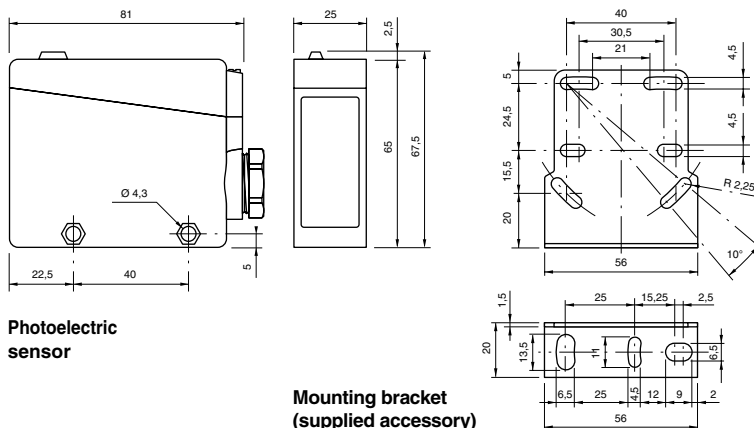
NO.	FUNCTION	DIP SWITCHES	OUTPUT DIAGRAM
<b>ALL MODELS</b>			
1	Muting	1: ON, 2: ON, 3: OFF, 4: OFF	Not activated relay
<b>MODELS WITHOUT TIMER</b>			
1	N. ON	1: ON, 2: ON, 3: ON, 4: OFF	Normally activated relay
2	N. OFF	1: ON, 2: ON, 3: OFF, 4: OFF	Normally not activated relay
<b>MODELS WITH TIMER</b>			
1	Delay on operate output ON	1: ON, 2: ON, 3: ON, 4: OFF	Normally activated relay
2	Delay on operate output OFF	1: ON, 2: ON, 3: OFF, 4: OFF	Normally not activated relay
3	One shot trailing edge output ON	1: ON, 2: ON, 3: ON, 4: OFF	Normally activated relay
4	One shot trailing edge output OFF	1: ON, 2: ON, 3: OFF, 4: OFF	Normally not activated relay

<sup>(1)</sup> Determined with CT04S reflector.

<sup>(2)</sup> Determined with halogen tungsten lamp 3000° K.

Note: for a proper use see norms at pages 7, 8, 9 and 10.

### Dimensions (mm)



### Characteristic curves

